

# ANNUAL REPORT 2022



Spreeha Foundation

empowering people - transforming lives



[spreeha.org](http://spreeha.org)

Sprezha envisions people  
**empowered**  
to permanently break the cycle of  
poverty

Sprezha touched **32,567** lives  
in 2022

Sprezha meets 9 United Nations  
Sustainable Development Goals





Dear Spreeha Family,

Spreeha's tenth Anniversary was in 2022. We have impacted well over 300,000 lives over ten years. Let's just imagine how many lives we can impact in another ten years.

Every year, Spreeha's achievements surpass our expectations. 2022 was no exception. Last year, we faced many challenges. The rest of the world seemed to be emerging from the pandemic but in Bangladesh we continued to encounter COVID-19 setbacks during the first quarter. Lung disease increased in the communities. Nevertheless, we persisted in supporting underserved communities and we have seen so many success stories and so much hope. Spreeha's Journey of Hope Healthcare continues its services. We continue with the community-based approach and we are expanding. Last year, we teamed up with The Jecco Foundation which provides cataract surgeries for senior citizens. Telehealth, which started as an urgent health consultation, is now expanding to more districts. We continue to promote healthy lifestyles and care of expectant mothers and their children's health. Education has been our focus too. With early childhood development centers, afterschool facilities, and scholarships we aim to nurture future leaders.

The Progga program and health camps for Rohingya communities continue, and we are extending our Youth Groups. Children can support each other and help face the challenges together.

In addition, we are concentrating in skills training to create new economic opportunities.

We express our gratitude to our CEO Ferdouse Oneza for guiding our community for the past 5 years, as we welcome Tazin Shadid as our new ED, we anticipate impacting even more lives in 2023.

Thank you all for your support in empowering people and transforming lives.

The Spreeha Team



Healthcare



Education



Skills Training



Economic Opportunities

1

# 34 million

people still living below the poverty line estimated by the UN in 2021. Total population in Bangladesh: 173 million

UN Data 2023

# 64% of THE (Total Health Expenditure)

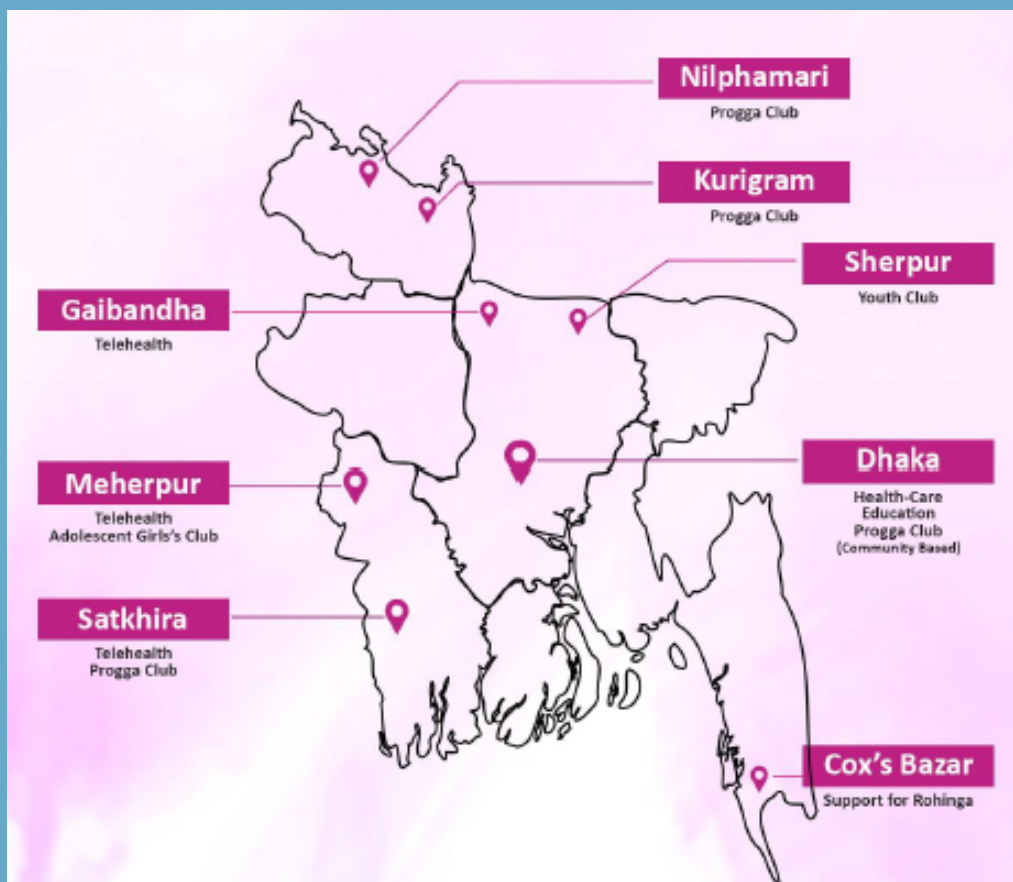
is out of pocket expenditure and no health insurance program exists.

Health Care Financing Strategy 2012-2032. Bangladesh Govt.

# Only about 20%

of the total workforce are formal paid employees and the rest are engaged in informal, unpaid, or agriculture work.

UNDP Bangladesh quarterly report 2018





# 2022

## Highlights

32,567

Total lives served

24,129

persons served in  
healthcare

7,213

Students and  
community members  
served

286

COVID Response in the first  
quarter of 2022

3



# Third Year of the Pandemic



## Challenges

- Beginning of 2022, Dhaka population as 22% Covid-19 positive rates.
- Prepare in case of lockdowns
- Respiratory issues on the rise

## Mitigation and Adaptation

- We treated our patients consulting for respiratory issues.
- Fortunately, Covid-19 cases decreased by the end of March.
- Telehealth

Last Summer, a community unities in Satkhira, in the southern part of Bangladesh, was hit hard by Cyclone Yaas. In response, Spreeha provided 12,800 meals to 400 families in this remote community.

# Impact Healthcare

## Healthcare Components

- Preventive Healthcare
- Maternal and Child Healthcare
- Malnutrition Screening
- Primary Healthcare
- Pharmacy and Laboratory
- Family Planning Program
- Events
- Partnership

In 2022, the Healthcare program served a total of

# 24,129 persons



258 Pregnant mothers registered for ANC



222 Postnatal mothers cared



222 Neonates cared



13,564 Patients treated



1,391 Fertile couples received family planning counselling



546 Children screened for malnutrition



7,496 Awareness outreach



Spreeha's healthcare goal is to educate pregnant mothers about health-seeking behavior. In 2022, 137 deliveries were supported, with no maternal deaths and only one stillbirth. We educate mothers on antenatal/postnatal checkups and provide free supplements. We also screen children under the age of five for malnutrition and provide nutritional capsules. Our aim is to identify vulnerable children and refer them to a nutritionist.



## Jahanara's Story: Healthcare at Ease

Jahanara lives in Rayerbazar with her family, including her mother-in-law. She frequently receives care at the Spreeha Healthcare Center.

She heard about it from community mobilizers.

The wait to speak to a doctor is not very long and her children can also come here for treatment.

Her youngest child, after failing to recover from a fever, was treated at the Spreeha Healthcare Center, where he underwent diagnostic tests and received treatment for urinary tract infection and jaundice. He is fully recovered now and very happy to receive care provided by friendly staff and doctors.

Jahanara's access to healthcare is one of the many reasons why this program is so important to us.

“Till this day, whoever I recommended about this healthcare center was quite satisfied with the overall treatment quality and service”



# Impact Education

Journey of Hope  
Education



During the pandemic, Spreeha brought schools to our students' homes at the beginning of the year. Maintaining the safety measures, teachers & community workers went door-to-door with school supplies and engaged students in preschool and after school activities.

Shams & Nasreen Scholarship Award of Spreeha has been designed to help students to sustain in multiple levels of education. It provides support for admission and tuition fees, books, supplies, and equipment-related expenses. **A total of eleven students received the scholarship in 2022.**

## Education Components

- Preschool program for children 3-5 years
- After school program for children 6+ years
- Scholarship program
- Education counselling and awareness
- Clubs: Drawing, Cultural, Book Reading and Kid's Club.

In 2022, the Education Program served a total of

# 7,213 persons



180 Children in Pre-school



240 Children in After-school



11 Scholarship Awards



6,156 Awareness Outreach



60 Youth members graduating from Youth club.

# 7

## Sifa Stands Against Early Marriage

Sifa, a 17-year-old student from Bangladesh, was pressured into a child marriage by her parents despite it being illegal. Through her involvement in a youth development initiative, Mayer Bandhan Kishori Club, Sifa was able to raise the issue with other members who took it as a challenge to stop the marriage. Despite initial resistance from Sifa's guardian, the club members and local community were able to persuade them to halt the marriage. Sifa is now able to attend school regularly and pursue her education without interruption, highlighting the importance of community support in preventing child marriage and protecting the rights of young girls.

The JOH project established Youth Clubs to provide young people a safe space. These clubs aim to implement advocacy activities to address various issues affecting adolescents, such as child marriage, drug addiction, and sexual abuse, and they organized activities to prevent these issues.

# Impact Skills Training

## Progga

Progga is a creative leadership program empowering adolescents with essential life skills that bring forth their leadership qualities from within. Through the club, young girls and boys engage in activities promoting self-definition, confidence and thus enabling them to transform societies as active participants. Progga is operating in remote locations. Spreeha completed the following milestones in 2022:

- Opportunities to participate.
- Organized Teachers' Training (ToT)
- Organized knowledge sharing session with members, teachers, and parents at Progga school's in 15 Progga schools of Nilphamari, Shatkhira, Kurigram and 2 Community Progga Clubs of Dhaka.



60 Children receiving Progga Club sessions in community.



30 Progga planning meetings with head-teachers and teaches.



17 Training of Trainer for Progga teachers.



750 Students Receiving sessions on leadership skills in School..



# Impact Skills Training

## AGC

The Adolescent Girls' Club (AGC) is a program that aims to empower adolescent girls aged 10-19 by providing them with life skills, leadership qualities, and accurate information and facilities. 120 girls were enrolled in the Spreeha AGC in Dhaka and Meherpur, Bangladesh to help them overcome social barriers caused by their gender, economic status, and class, and secure a better future for themselves. The AGC held 228 sessions in Meherpur and 213 in SCRC in Dhaka, with an average attendance of 73%. The program covered a range of topics including self-expression, puberty, menstrual hygiene, reproductive health, child development, and rights as adolescents. A learning module consisting of twelve chapters was developed and distributed to AGC girls, which they completed with the help of an instructor. The AGC also served as a tool to prevent child marriage by educating members about its harmful consequences and encouraging them to share this information with their parents.



120 Adolescent Girls' Club Program

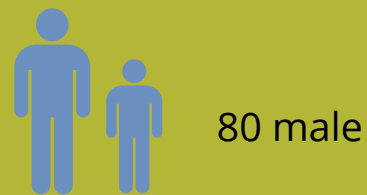
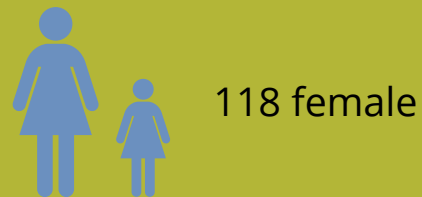
Adolescent Girls' Club Program in Rayerbazar, and outside of Dhaka, reopened after an extended closure.

# Support for Rohingya Refugees

## Emergency Disaster Response

Spreeha organized a health camp in Ukhiya, Cox's Bazar, in partnership with Gana Unnyan Kendra (GUK) in November, 2022. The health camp provided doctor consultation, diabetic test, safe medicine, consultations on child health and women health.

### Total of 298 patients



# 11



# Finances 2022

	2021	2022
<b>REVENUE</b>	<b>297,808</b>	<b>382,827</b>
Event Ticket Sales	0	8,661
Grants	14,659	80,160
Individual and Business Contributions	276,598	290,206
Sponsorship	6,550	3,800
<b>EXPENSES</b>	<b>238,427</b>	<b>329,597</b>
<b>PROGRAMS</b>	<b>196,866</b>	<b>258,336</b>
Global	151,166	220,625
Local	13,350	5,360
Program support in HQ	32,350	32,351
<b>FUNDRAISING</b>	<b>6,470</b>	<b>19,220</b>
<b>COMMUNICATION/NETWORKING</b>	<b>11,198</b>	<b>20,931</b>
Marketing and Communications	1,443	5,987
Meeting Expenses	0	96
Business Registration Fees	50	60
Staff time	9,705	14,000
Travel	0	788
<b>MANAGEMENT /ADMIN / ACCOUNTING</b>	<b>25,404</b>	<b>31,110</b>
Facilities rent, parking, utilities	3,000	3,000
Accounting Services	4,150	4,150
Management Staff	16,175	22,033
Banking, Software fees and office expenses	2,079	1,927
Insurance	0	0
<b>BALANCE</b>	<b>57,870</b>	<b>53,230*</b>

\*This amount is carried over to the next fiscal year.



# Community Outreach & Partnership

## Spreeha in the Park

The Annual Summer Picnic 2022 was held in July at Newcastle Beach Park!



## Partnership with The Jecco Foundation.

In September, they provided surgeries to 107 people in The Anawara-Hameda Eye Hospital in Faridpur.



## Community Knowledge Share

We had one Community Knowledge Share Session: On Women's History Month, we had a robust discussion on how the pandemic has changed the work environment especially for women.



## Workshops with IOM

Spreeha partnered with the IOM - UN Migration Agency to raise awareness on safer shelter among Bangladeshi diaspora members in the USA, and our community members in the disaster-prone areas of Bangladesh.

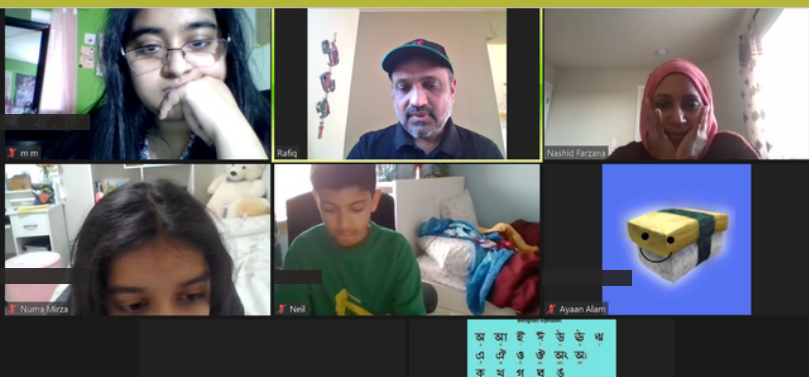


# Serving Local Communities



## Spreeha Kitchen

Thanks to our community members for serving **525** meals in 2022.



## Spreeha Pathshala

**25** Students were enrolled throughout last year to learn Bengali language and culture.

## Local Programs



## Spreeha Youth Club

The Spreeha Kid's/Youth Club engages children in various activities to develop their skills and learn new things. Last year, they showcased their musical talents and helped during a fundraiser by promoting Spreeha in the community, taking care of kids and checking in guests. The club provides children with a platform to discover their talents, develop their skills, and learn new things in a fun and engaging environment.

# 14



# In 2022, Spreeha turned 10!

Thank you for your invaluable support  
with Spreeha's JOH





# Volunteer

Share your passion by getting involved with Spreeha. The majority of our organization is volunteer-run. We need help from individuals from all sorts of backgrounds. Opportunities are available no matter how much or how little time you can commit. We fit your skills, interest, and schedule. We also have virtual volunteer opportunities available. Every minute counts! If you are interested, please feel free to contact us at [volunteer@spreeha.org](mailto:volunteer@spreeha.org)

A big shout out to the **63** Spreeha volunteers.  
**1,645** hours volunteers donated!



## **Start a new chapter**

Spread your leadership and passion with others in your area by setting up a new Spreeha chapter in your area. Please contact us and we can support you throughout the process.

## **Spread the word**

You know your friends and family best, so use your own words - tell them why you are involved in Spreeha and what it means to you. The more people who know about us, the more good we can do in the world. Help us get the word out to your friends and loved ones!

## **Donate**

Many companies have giving campaigns or matching donations. Check with your employer to see how you can include Spreeha in your organization's philanthropy. Spreeha is also a Zakat-approved charity. You can donate via Facebook or webpage at [spreeha.org](http://spreeha.org).

## **Key Partners**

BRAC: Curriculum and content support for adolescent girls' club; Extend The Day: Solar powered lights among the Rohingya Community; Gana Unnayan Kendra: Rohingya refugee healthcare partner; Global Giving: Donation platform and onsite visit; Global Washington: Feature on Global WA newsletter and social media; The International Organization for Migration (IOM): Raise awareness about disaster management; Lake Washington United Methodist Church in Kirkland; Spreeha Kitchen partnership; Microsoft: Selection as Microsoft YouthSpark partner, also Microsoft partnership for "Diagnostics for Goods" program; Tasveer: Promotion on mutual topics; UNDP: Kusholi, the skilled training partnership; The Jecco Foundation.

Sprezha is  
Empowering people and  
Transforming lives



Sprezha Foundation  
2205 152nd Ave NE, Redmond, WA 98052

sprezha.org

[fb.com/sprezha.org](https://fb.com/sprezha.org) | [twitter.com/sprezhaorg](https://twitter.com/sprezhaorg) | [info@sprezha.org](mailto:info@sprezha.org) | [instagram.com@sprezhaorg](https://instagram.com@sprezhaorg)